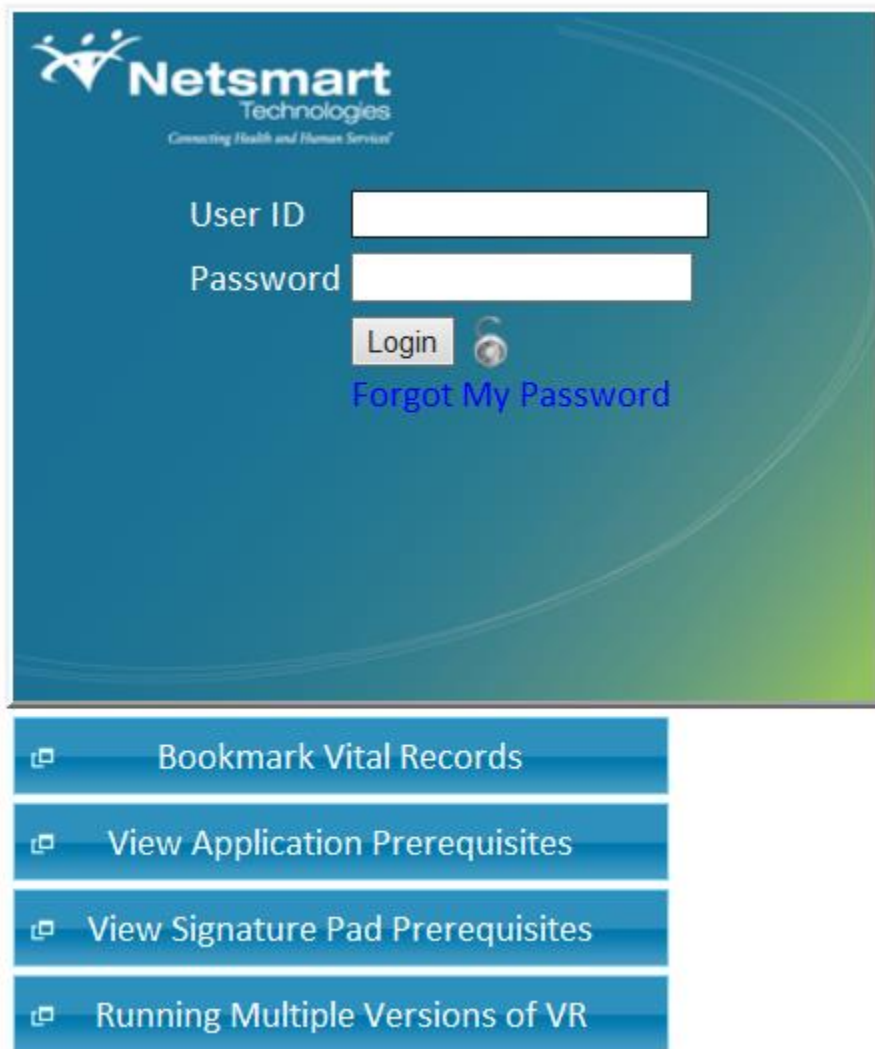


Setting Up a PC for use with EBR/EDRS



The image shows a Netsmart Technologies login interface. At the top left is the Netsmart Technologies logo with the tagline "Connecting Health and Human Services". Below the logo are two input fields: "User ID" and "Password". To the right of the "Password" field is a "Login" button with a circular icon. Below the "Login" button is a blue link that says "Forgot My Password".

Below the login screen is a vertical list of four blue buttons, each with a small square icon on the left:

- Bookmark Vital Records
- View Application Prerequisites
- View Signature Pad Prerequisites
- Running Multiple Versions of VR

(Fig. 1)

Click on the button 'View Application Prerequisites' (Fig. 1).

Application Prerequisites


- Windows XP SP2 or greater, Windows Vista SP1 or greater, -or- Windows 7
- NET 4.0 Framework
- IE 6+
- Current windows user with full access to local client resources (Printer, Signature Pad, Fax, etc.)
- Netsmart VR BA Prerequisites
- Netsmart VR BA Prerequisites Setup wizard (does all of the above)

Ok

(Fig. 2)

Click on the 'Netsmart VR BA Prerequisites Setup wizard' (Fig. 2). This is the last option.

Do you want to run or save **XPW8_VRBASetup.exe** (14.5 MB) from **nvrs.netsmartcloud.com**?

 This type of file could harm your computer.

Run

Save

Cancel

(Fig. 3)

Click on 'Save'.

The **XPW8_VRBASetup (1).exe** download has completed.

Run

Open folder

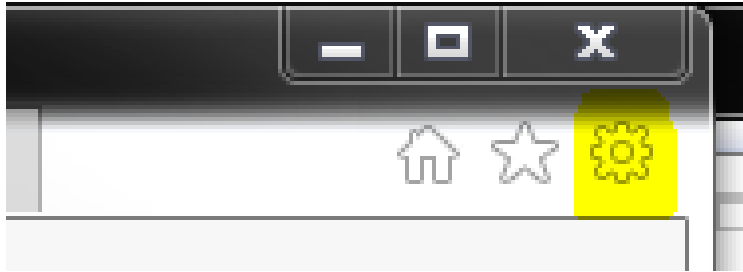
View downloads

(Fig. 4)

Click on 'Run' (Fig. 4).

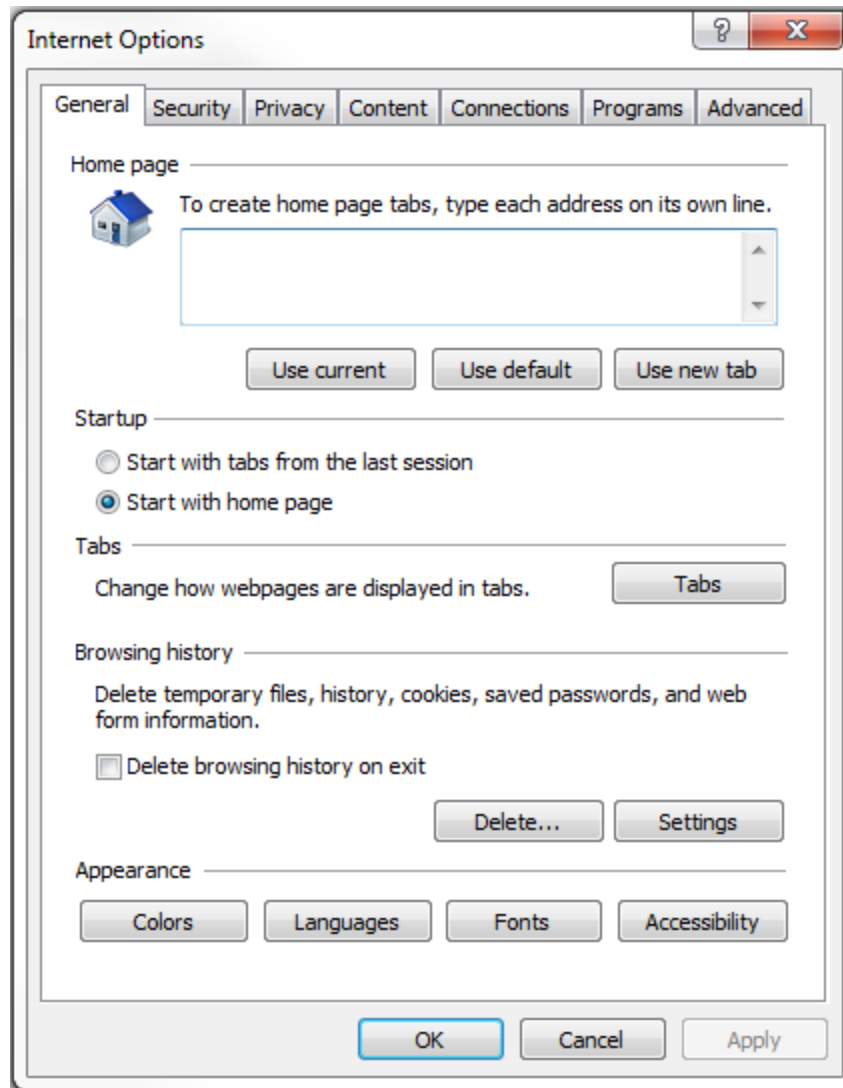
Take the defaults to install the program.

Next click on Gear Icon in top right corner of Internet Explorer window (Fig. 5). (It is located right underneath the 'X')



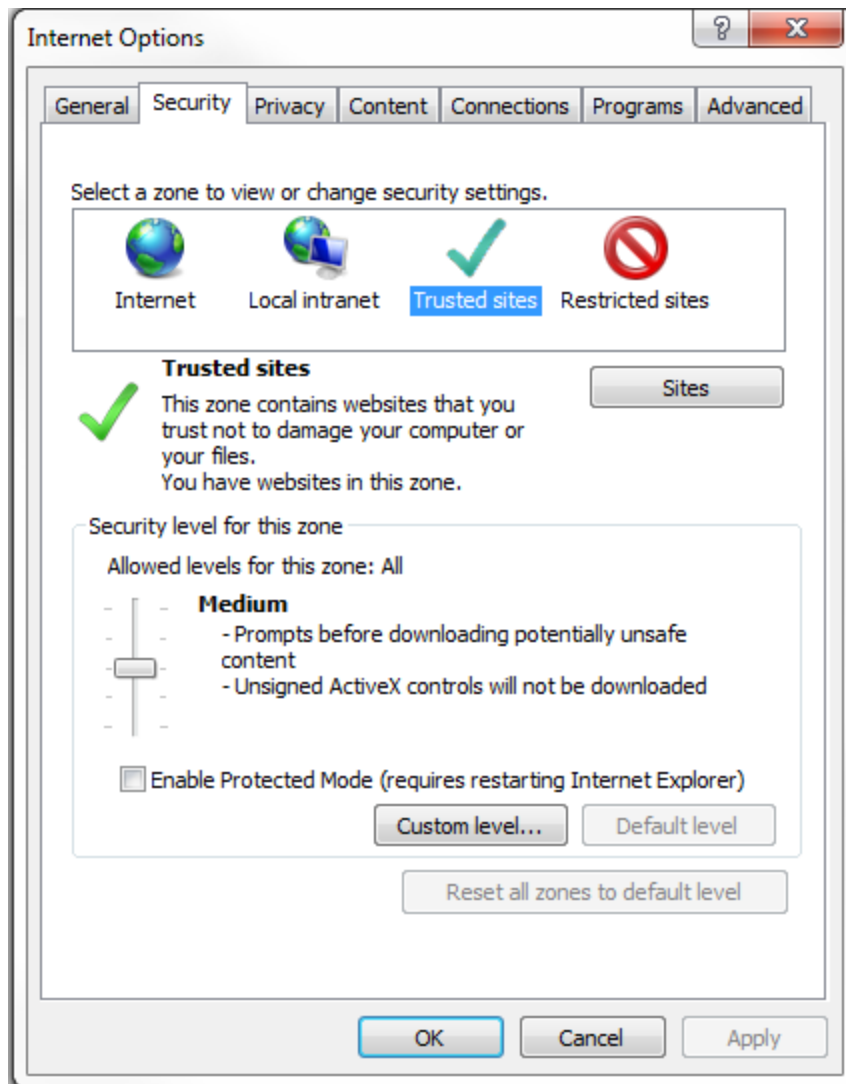
(Fig. 5)

A menu will open. Select 'Internet Options'. The small window shown below will appear (Fig. 6).



(Fig. 6)

**Click on 'Security' tab. Select 'Trusted Sites' if it is not already highlighted as shown (Fig. 7).
Click the button "Sites"**



(Fig. 7)

You will now see the small window shown (Fig. 8).

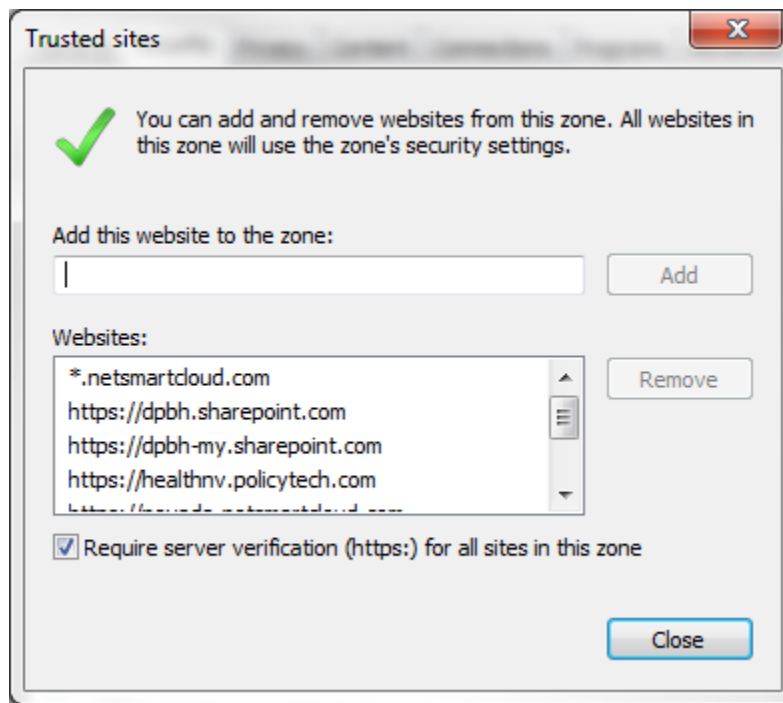
If there is a site listed in the 'Add this website to the zone:' field, click on the Add button. If there is not site listed, look for the '*.netsmartcloud.com' listed in the 'Websites:' field.

If the "*.netsmartcloud.com" is not listed, uncheck the 'Require server verification (https:) for all sites in this zone'.

Type in the "*.netsmartcloud.com" in the 'Add this website to the zone:' and click Add button.

Click Close button, then the Ok button. Close Internet Explorer.

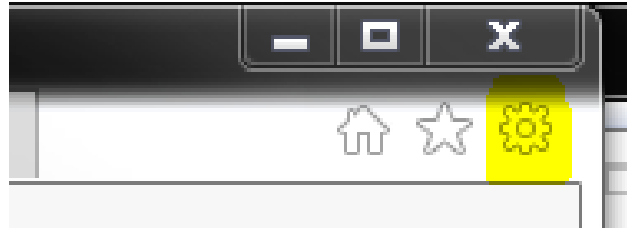
Open Internet Explorer and try to log in.



(Fig.8)

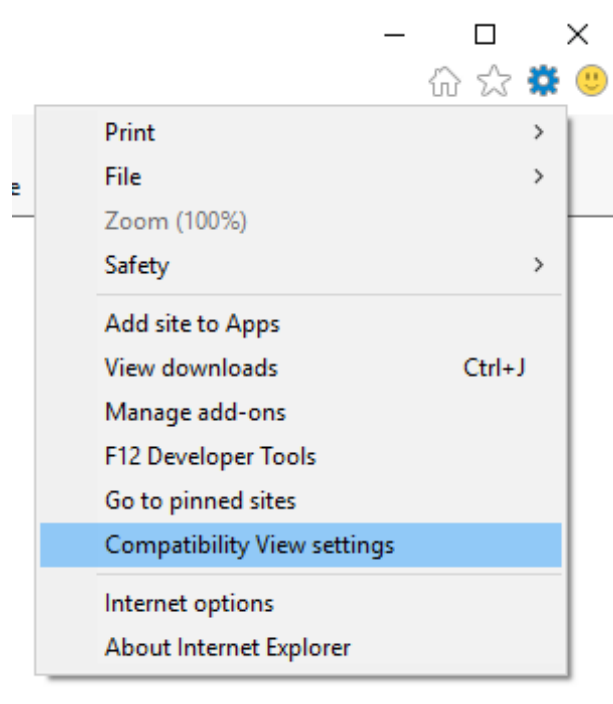
Compatibility View Settings

Sometimes it is necessary to add to compatibility settings also. Click on Gear Icon in top right corner of Internet Explorer window (Fig. 9). (It is located right underneath the 'X')



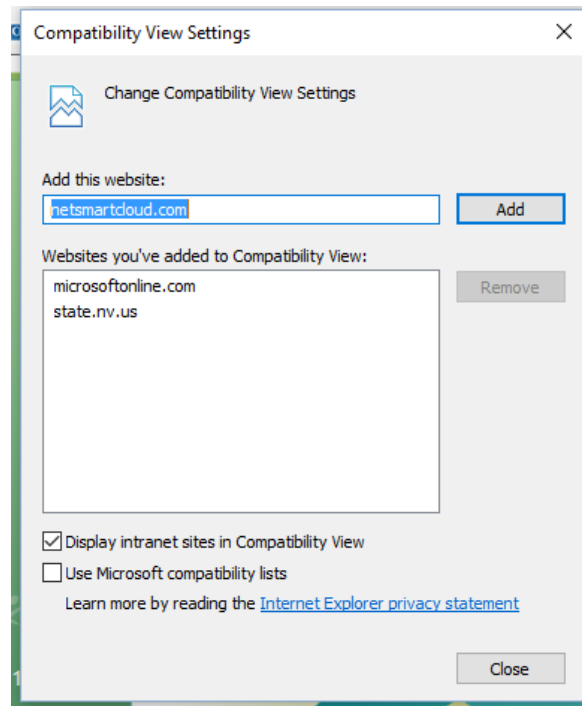
(Fig. 9)

A menu will open. (Fig. 10) Select 'Compatibility View Settings'.



(Fig. 10)

The small window shown below will appear. (Fig. 11) Click on 'Add' button then 'Close' button.



(Fig. 11)

Using EBRs/EDRS on a MAC

The least costly option for Mac users is to install the free Virtualization software virtual box, which is downloadable from www.virtualbox.org. They will then need to purchase a Windows Operating Software license (Windows Home Premium would work) for as little as \$99 per copy (on www.newegg.com as an example).

Virtual box does not require a reboot in order to use the installed windows software. The Netsmart application can be run in a window alongside other OSX native applications.

A separate drive or partition is not required for this method. At most, 10GB of space would be used. With thin provisioning technologies used by Virtual box, it is likely the total needed will be less than 5 or 6GB. Currently storage costs are \$1-2 per GB.

You can also try <https://www.vmware.com/products/fusion/>

Or... <http://www.parallels.com/>

You will need a copy of Windows Operating System for these to work.

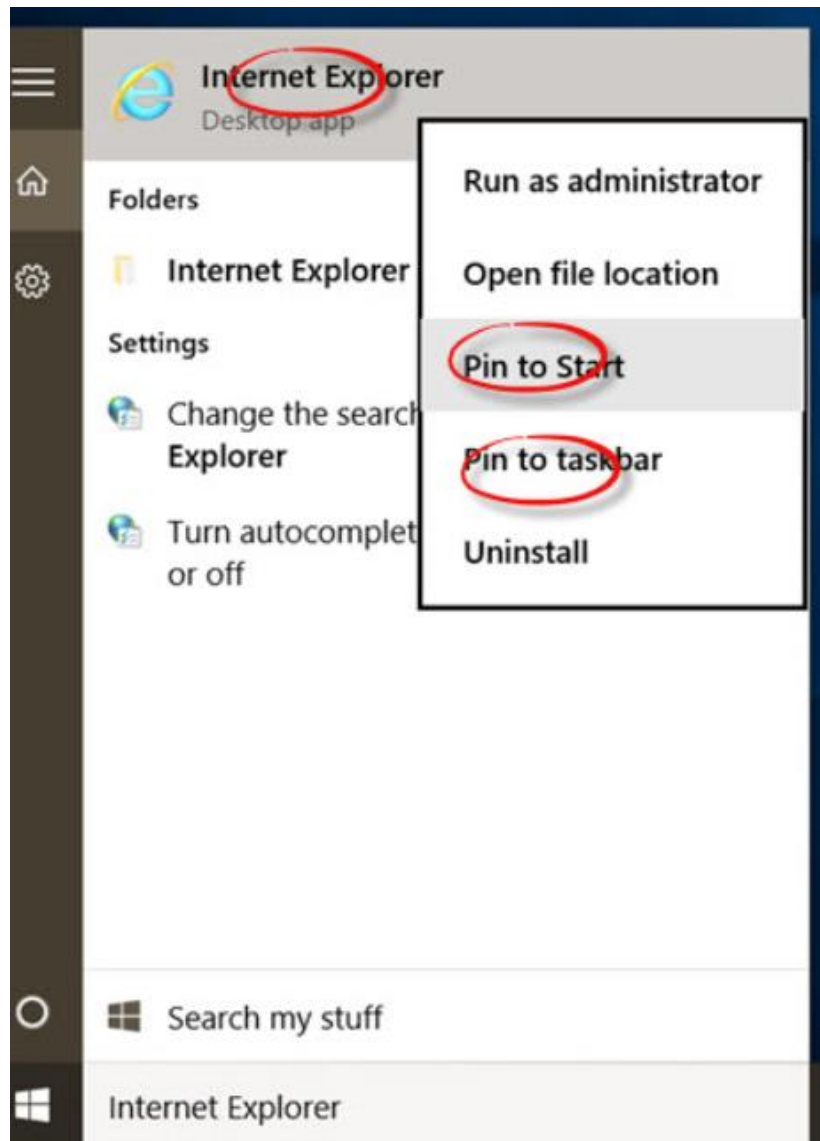
Accessing Internet Explorer in Windows 10

At the bottom you should be able to type in an item to search for. It is titled 'Search my stuff'. (Fig. 1)

Type in 'Internet Explorer'. That should display the **Desktop App**.

Right click on 'Internet Explorer' and select either 'Pin to Start' or 'Pin to taskbar' as shown in the following screen. I would suggest 'Pin to taskbar' as this will show it at the bottom of your screen whenever you wish to use it.

Once you open this, then go to log in screen and try to log in.



(Fig. 1)